

TRASH ENCLOSURE NOTES:

1. THE DESIGN OF THE TRASH ENCLOSURE SHALL INCORPORATE THE SAME MATERIALS AND ARCHITECTURAL INTEREST USED IN THE DESIGN OF THE PRIMARY BUILDING FOR A COORDINATED LOOK AND FEEL THE DEVELOPMENT.
2. WASTE BINS TO BE SIZED TO ACCOMMODATE PROPERTY WASTE, RECYCLING AND COMPOSITE DISCARDS.
3. FOOD RELATED FACILITIES MUST PROVIDE A GREASE COLLECTION RECEPTACLE.
4. WASTE BINS SHALL BE CONFIGURED TO ALLOW FULL ACCESS TO THE FRONT OF THE BIN.
5. CURBS, 6" MIN WIDTH AND 8" MIN HEIGHT, CAN BE INSTALLED AROUND ALL INTERIOR WALLS TO PREVENT STRUCTURAL DAMAGE FROM BIN LOADING.
6. SCREEN/BARRIER CAN BE INSTALLED TO PREVENT ILLEGAL DUMPING AND IS REQUIRED IF OPEN SPACE BETWEEN WALL AND ROOF IS GREATER THAN 2'.
7. IRRIGATED LANDSCAPE STRIP, 5' MIN. WIDTH, WITH PLANTED VEGETATION TO SHIELD ENCLOSURE WALLS REQUIRED IF ENCLOSURE IS VISIBLE FROM ROADWAY.
8. GRADING AROUND THE ENCLOSURE SHALL BE DESIGNED TO DRAIN STORMWATER AWAY FROM THE ENCLOSURE AT A 1% TO 2% SLOPE. THE INTERIOR ENCLOSURE PAD SHALL BE GRADED SUCH THAT NO RUNOFF OCCURS FROM INSIDE THE PAD.
9. ENCLOSURES SERVICING FOOD SERVICE FACILITIES ARE REQUIRED TO HAVE A HOSE BIB. ENCLOSURE PAD SURFACE OF ENCLOSURES WITH A HOSE BIB SHALL SLOPE AT A 1% TO 2% TO AN INTERIOR FLOOR DRAIN CONNECTED TO THE SANITARY SEWER INTERCEPTOR.
10. IF HOSE BIB IS USED PROVIDE CAGE, BUMPER, OR OTHER PROTECTION.
11. DIRECT ROOF DRAINAGE TO STORMWATER CONTROL MEASURE OR LANDSCAPED AREA.
12. PEDESTRIAN ACCESS GATE ON THE SIDE OR THE BACK OF ENCLOSURE SHALL BE PROVIDED, NOT IN THE DIRECT SIGHT OF CUSTOMERS AND NOT VISIBLE FROM ROADWAY.
13. PARKING SHALL BE PROHIBITED IN DOOR SWING AREA AND IT SHALL BE STRIPED AS PER CITY OF PATTERSON STANDARDS.
14. ROOF SHALL BE MINIMUM 20 GAUGE METAL ROOF DECK PRIME AND PAINTED BOTH PAGES TO MATCH THE BUILDING.
15. TRASH ENCLOSURE SIZE AND DESIGN CAN BE CHANGED WITH THE APPROVAL OF THE CITY ENGINEER. MATERIAL SUBMITTALS SHALL BE SUBMITTED TO ENGINEERING DEPARTMENT FOR REVIEW.
16. LIGHTNING INSIDE AND AROUND THE AREA OF THE TRASH ENCLOSURE MUST BE INSTALLED WITH MOTION SENSOR.
17. AN ACCESSIBLE PATH OF TRAVEL SHALL BE PROVIDED FROM MAIN BUILDING TO THE PEDESTRIAN DOOR.
18. IF POSSIBLE, DIRECT ACCESS TO THE COLLECTION TRUCK SHALL BE PROVIDED SO THAT TRUCK CAN DRIVE STRAIGHT UP TO THE FRONT OF THE ENCLOSURE FOR SERVICING.
19. THE GATE DOORS MUST BE CONSTRUCTED WITH A MECHANISM THAT WILL PROVIDE A MEANS OF SECURING THE GATE DOORS IN BOTH AN OPENED AND CLOSED POSITION.
20. ALL GATES MUST BE LOCKABLE USING A STANDARD PADLOCK.

Aug 20, 2018 - 11:29am L:\Standard details\Cad Files 2018\Section 10 (Parking)\TE-1.dwg

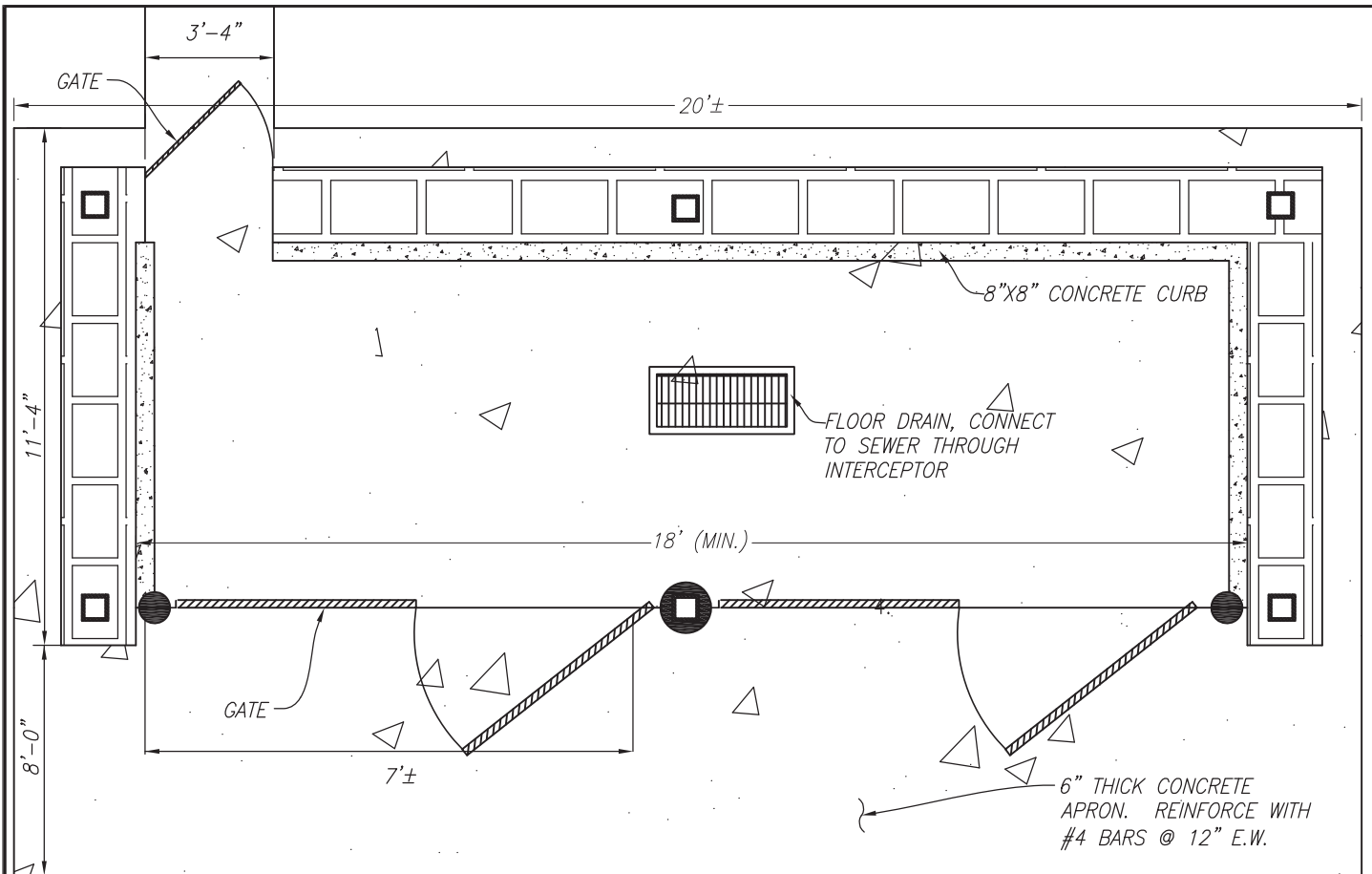
CITY OF PATTERSON IMPROVEMENT STANDARDS



DRAWN BY: J. MANGAT
 CHECKED BY: M. WILLETT
 APPROVED BY: *Fernando Ulloa*

TRASH ENCLOSURE NOTES

FERNANDO ULLOA, CITY ENGR.	02/03/16 DATE	62736 R.C.E. NO.	DRAWING NO. TE - 1 NTS
----------------------------	------------------	---------------------	----------------------------------

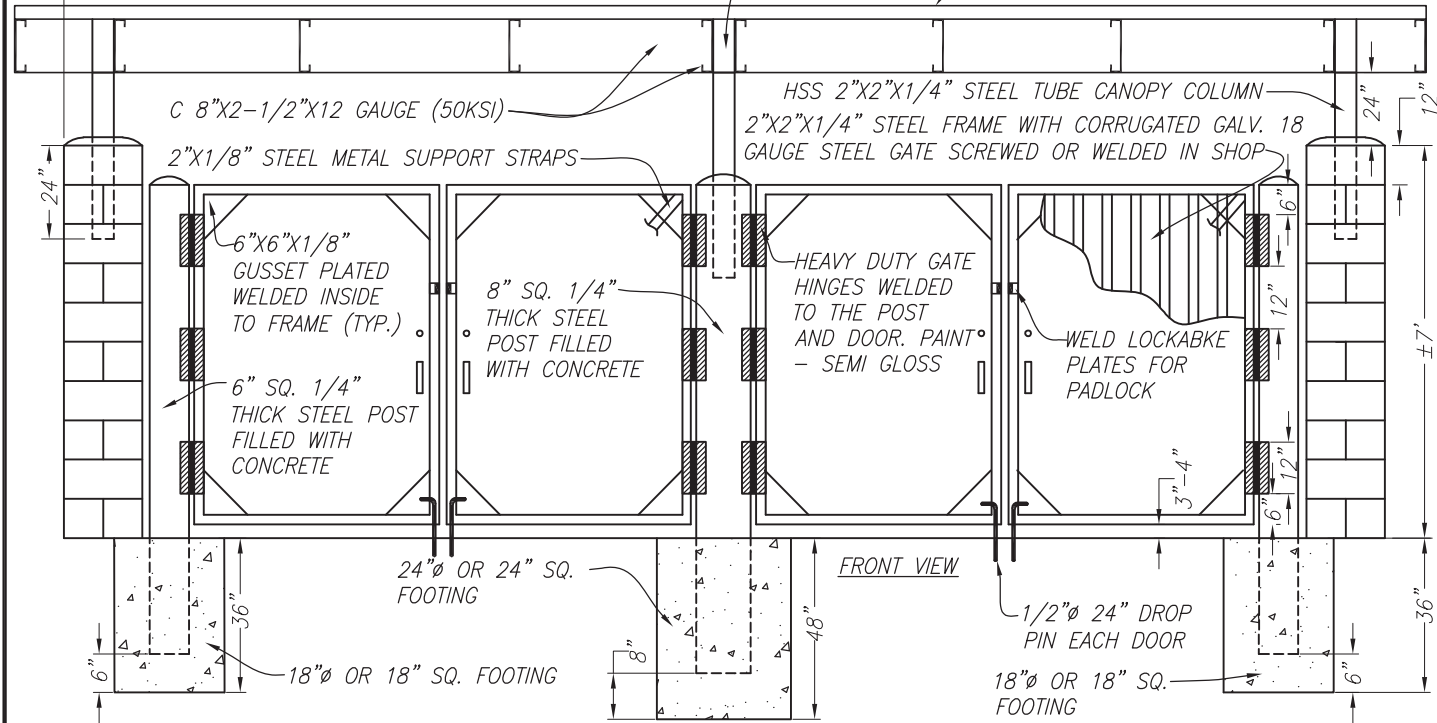


PLAN VIEW

C CHANNELS SHALL BE CONNECTED TO COLUMNS WITH 3/16" STEEL PLATES AND L3X3 12 GA. SHALL BE USED TO CONNECT C CHANNELS WITH EACH OTHER.

SLOPE 1/8":12" TOWARDS BACK

24 GAUGE METAL DECK INSTALLED ON METAL BARS WELDED TO C CHANNELS.



FRONT VIEW

CITY OF PATTERSON IMPROVEMENT STANDARDS

Sep 07, 2018 - 12:04pm L:\Standard details\Cad Files 2018\Section 10 (Parking)\TE-1.dwg



DRAWN BY: J. MANGAT
 CHECKED BY: M. WILLETT
 APPROVED BY: *Fernando Ulloa*

FERNANDO ULLOA, CITY ENGR.

02/03/16
 DATE

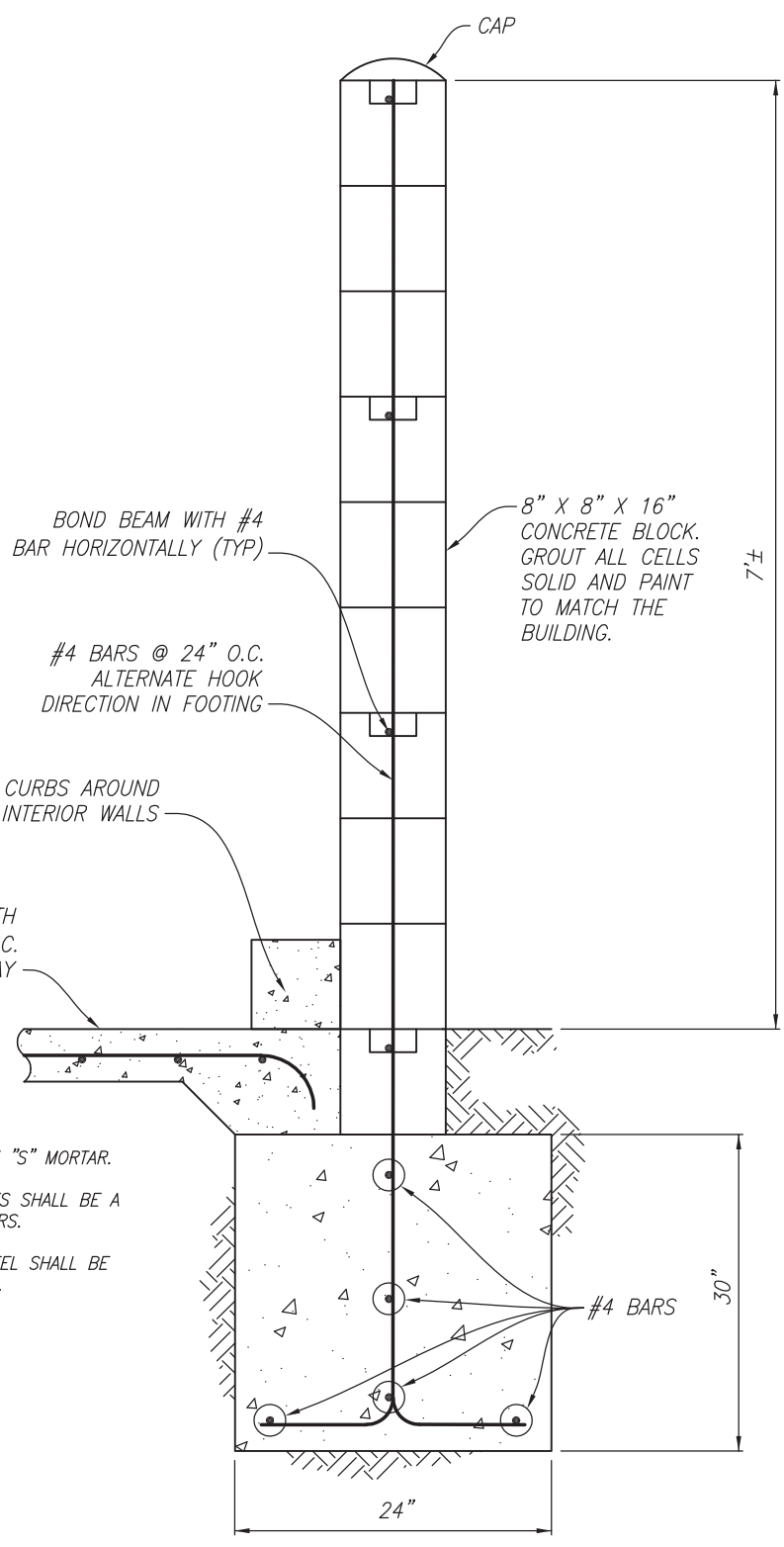
62736
 R.C.E. NO.

DRAWING NO.
 NTS

TRASH ENCLOSURE DETAIL

TE - 2

Sep 07, 2018 - 11:57am
L:\Standard details\Cad Files 2018\Section 10 (Parking)\TE-3.dwg



TYPICAL WALL SECTION WITH FOOTING

CITY OF PATTERSON IMPROVEMENT STANDARDS



DRAWN BY: J. MANGAT
 CHECKED BY: M. WILLETT
 APPROVED BY: *Fernando Ulloa*

TRASH ENCLOSURE DETAILS

FERNANDO ULLOA, CITY ENGR.	02/03/16 DATE	62736 R.C.E. NO.	DRAWING NO. NTS	TE - 3
----------------------------	------------------	---------------------	--------------------	--------