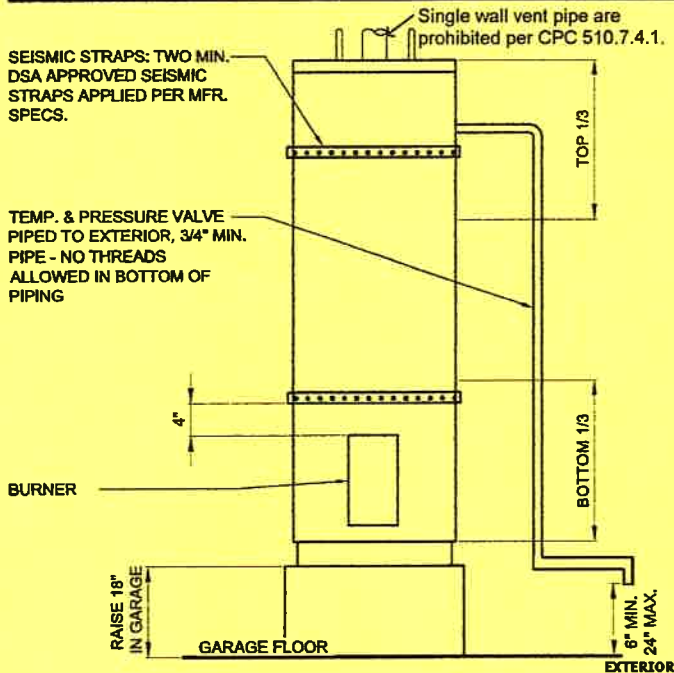


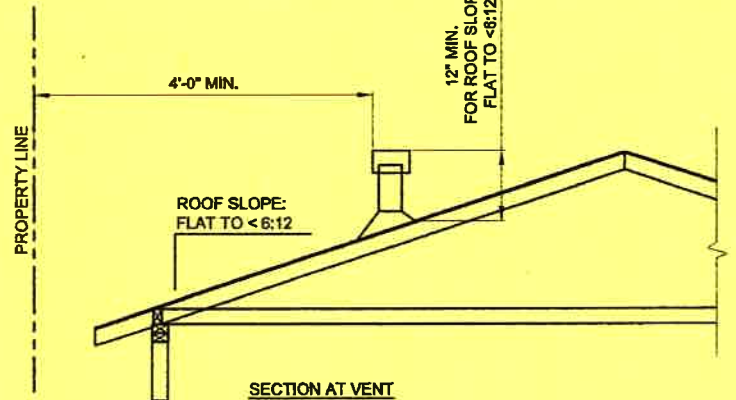
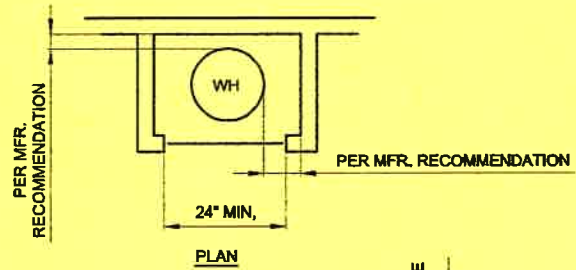
A6 - Water Heater & Egress Window Detail

THIS DRAWING DEPICTS MINIMUM CODE REQUIREMENTS PER CRC INFORMATION IS FOR REFERENCE ONLY AND IS NOT A SUBSTITUTE FOR ACCURATE DRAWINGS PREPARED FOR EACH PROPOSED CONSTRUCTION PROJECT.



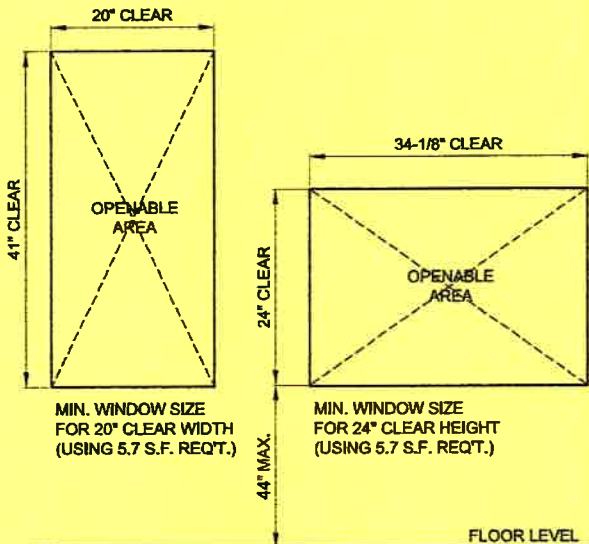
NOTE:
NO GAS-FIRED WATER HEATER ALLOWED IN BEDROOMS, BATHROOMS, CLOTHES CLOSETS, OR ANY SPACE OPENING INTO A BEDROOM OR BATHROOM.

WATER HEATERS

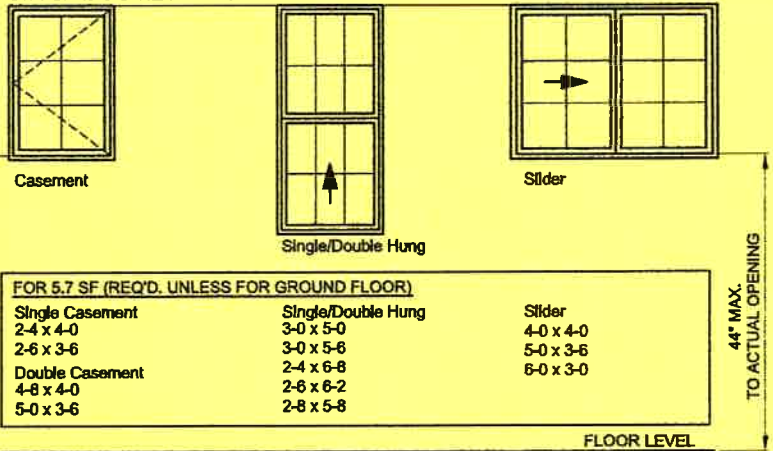


THE FOLLOWING WINDOW SIZES WILL BE THE MINIMUM ALLOWED FOR EGRESS UNLESS MANUFACTURERS DATA IS PROVIDED PROVING ACCEPTABLE OPENING SIZE

NOTE: SIZES ARE TAKEN FROM DATA SUPPLIED BY WINDOW MANUFACTURERS, HOWEVER THESE ARE GENERAL DIMENSIONS. IT IS THE OWNER'S RESPONSIBILITY TO VERIFY THAT THE ACTUAL WINDOWS INSTALLED MEET THE MINIMUM EGRESS REQUIREMENTS.



STANDARD 6"-8" HEADER HEIGHT



FOR 5.7 SF (REQ'D. UNLESS FOR GROUND FLOOR)

Single Casement	Single/Double Hung	Slider
2-4 x 4-0	3-0 x 5-0	4-0 x 4-0
2-6 x 3-6	3-0 x 5-6	5-0 x 3-6
Double Casement	2-4 x 6-8	6-0 x 3-0
4-8 x 4-0	2-6 x 6-2	
5-0 x 3-6	2-8 x 5-8	

FOR 5.0 SF (GROUND FLOOR)

Single Casement	Single/Double Hung	Slider
2-4 x 3-6	2-9 x 5-0	4-0 x 3-6
2-6 x 3-0	3-0 x 4-8	5-0 x 3-0
Double Casement	2-4 x 5-8	6-0 x 3-0
4-8 x 3-6	2-6 x 5-0	
5-0 x 3-0	2-8 x 5-2	

EMERGENCY ESCAPE / EXIT WINDOW FOR BEDROOMS

CRC R310 REQUIREMENTS

- 20" MIN. CLEAR WIDTH
- 24" MIN. CLEAR HEIGHT
- 5.7 SF MIN. OPENABLE AREA (EXCEPT FOR GROUND FLOOR)
- 5.0 SF MIN. OPENABLE AREA FOR GROUND FLOOR

Provide consistent Title Block on all sheets. Leave margin on all sides.

NOTE: OTHER WINDOW TYPES SUCH AS AWNING, BAY W/ FIXED CENTER & SINGLE / FIXED COMBO ARE NOT ALLOWED AS AN EGRESS WINDOW UNLESS MFR'S DATA IS PROVIDED SHOWING ACCEPTABLE OPENING SIZE.

NAME, ADDRESS AND PHONE NO. OF DESIGNER
XXX XXX XXX XXX
XXX XXX XXX XXX

WET SIGNATURE OF DESIGNER ON EACH SHEET
(AND PROFESSIONAL STAMP IF APPLICABLE)

EXAMPLE RESIDENCE

WH DETAIL & EGRESS WDW.

SAMPLE DRAWING

SCALE: NTS
DATE:

SHEET NO.

A6