

Sustainable Groundwater Management Act (SGMA)

GSA Public Hearing

December 6, 2016





Acronyms

- SGMA-Sustainable Groundwater Management Act
- GSA-Groundwater Sustainability Agency
- GSP-Groundwater Sustainability Plan
- DWR-Department of Water Resources
- SLDMWA-San Luis Delta Mendota Water Authority
- PID-Patterson Irrigation District
- DPWD-Del Puerto Water District
- WSID-West Stanislaus Irrigation District
- MOA-Memorandum of Agreement
- LAFCO-Stanislaus Local Agency Formation Commission



Purpose of SGMA

SGMA empowers local agencies to adopt groundwater management plans that are tailored to the resources and needs of their communities, while minimizing state intervention



SGMA Phase I - Form GSA

- I. A GSA is responsible for developing and implementing a groundwater sustainability plan (GSP)
- II. The goal of the GSP is to meet the sustainability goal of the basin to ensure that it is operated within its sustainable yield

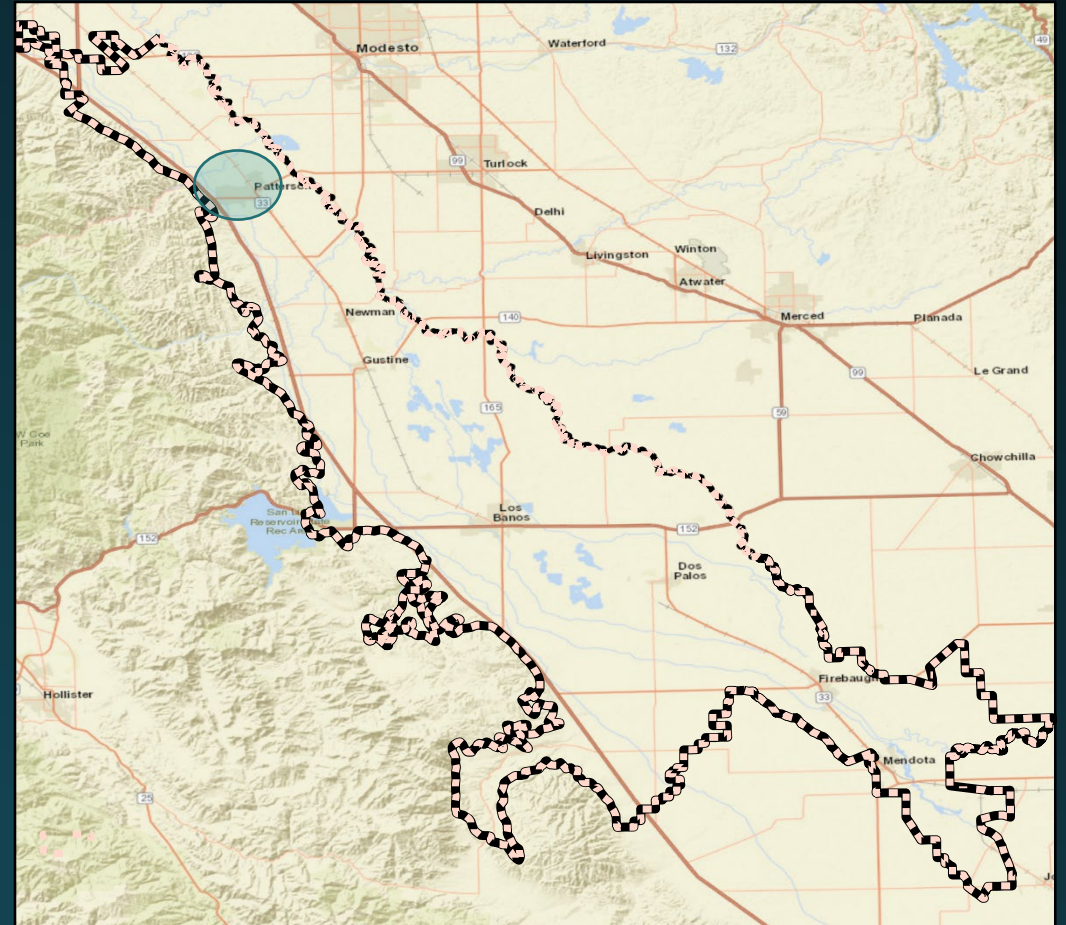


SGMA Phase I - Form GSA

- III. GSAs must be formed by June 30, 2017
- IV. If a portion of the basin is left unmanaged, the county is presumed to be the GSA for the unmanaged area.

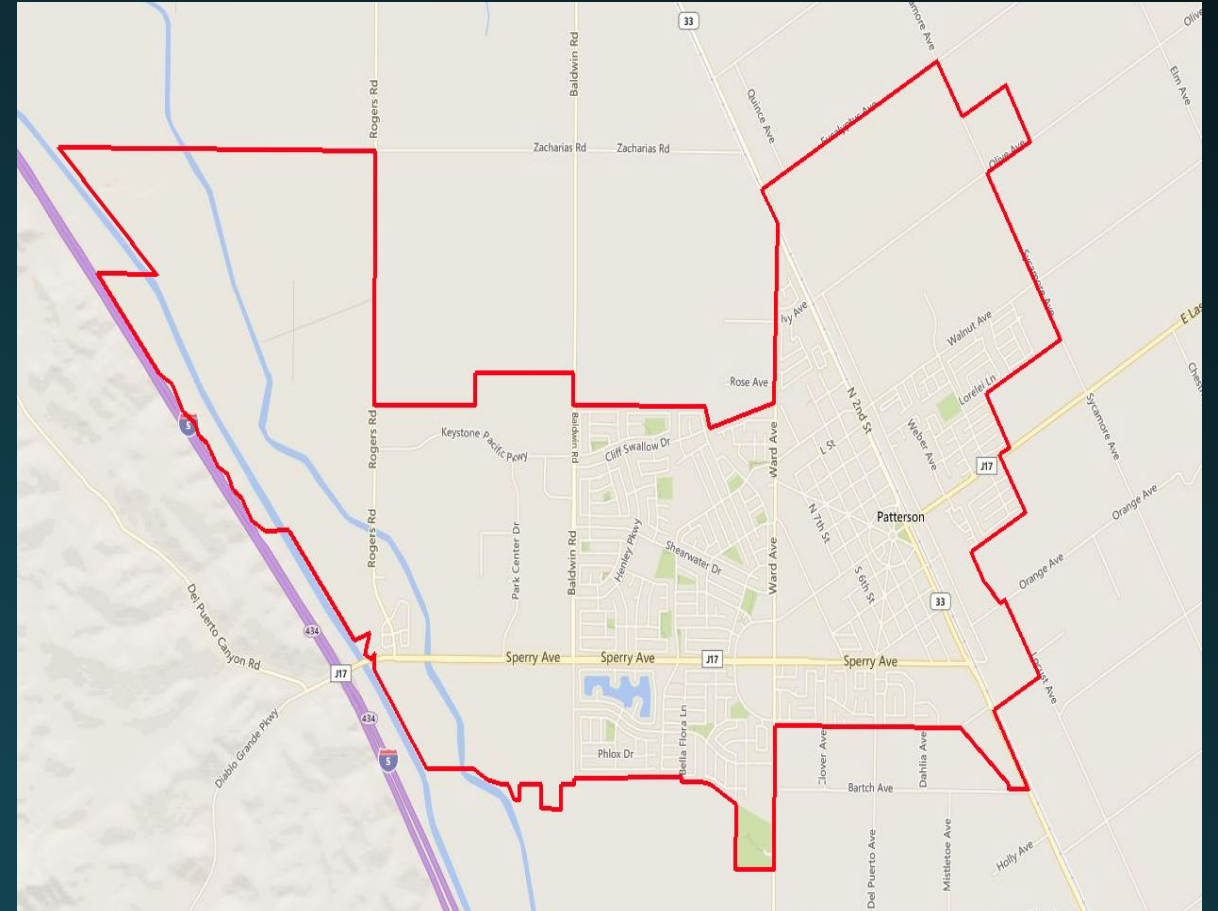
Northern Delta-Mendota Regional Efforts

- I. City has been participating in regional outreach efforts with Stanislaus County (TAC) and Water Authority.
- II. Primary stakeholders include:
 - I. West Stanislaus Irrigation District
 - II. Patterson Irrigation District
 - III. Del Puerto Water District
 - IV. Stanislaus County



Northern Delta-Mendota Regional Efforts

- III. PID and WSID have successfully form their own individual GSA.
- IV. City and DPWD has expressed interest in forming their own as well.
- v. Need to address overlap within DPWD service area.





Advantages-City GSA Formation

- I. If operating under MOA, there will be reduced operating costs.
- II. Reduces staff time and resources.
- III. More control and/or input in long-term sustainability, regulation, use, and quality.



Advantages-City GSA Formation

- iv. Will not be grouped with other agencies that do not have the same vision or growth needs as the city.
- v. Implementation will be better controlled by the city for our GSA service area.
- vi. Should the MOA fail, the city GSA will already be formed and can proceed with own GSP.




Disadvantages-City GSA Formation

- I. In the implementation stage, there will be an increase in the roles and responsibilities of the GSA.
- II. Increased staff time and operating cost



SGMA Phase II – Develop GSP

- I. By January 31, 2020 high or medium priority basins and that are subject to critically overdraft must be managed by a single GSP or multiple coordinated GSPs.
- II. GSPs must include:
 - I. Administrative information
 - II. Description of basin setting
 - III. Sustainable management criteria
 - IV. Description of monitoring network
 - V. Projects and management actions



SGMA Phase III - Implementation

- I. Implement measures identified in the plan
- II. Adopt rules and regulations such as pumping restrictions and fees
- III. Data collection, metering, monitoring
- IV. Water supply development (conveyance, storage, recharge)
- V. Provide statistical and annual reports



Recommendation

Adopt resolution electing to be a GSA for the City of Patterson located within the Delta-Mendota sub basin